

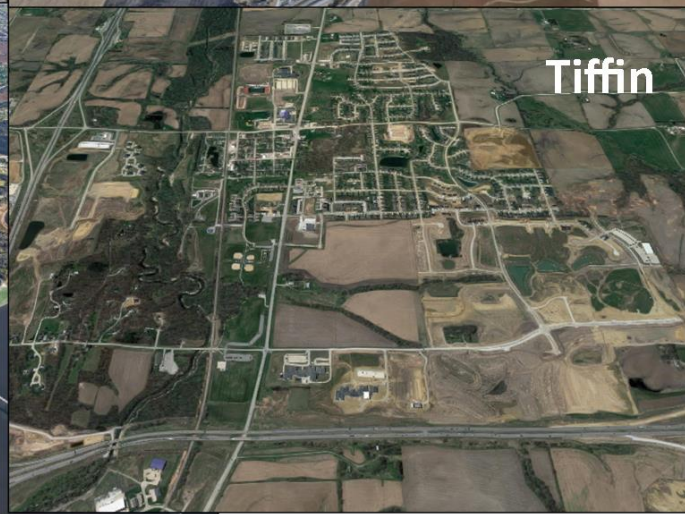
City of Robins, Iowa Looking to the Future

Part 2

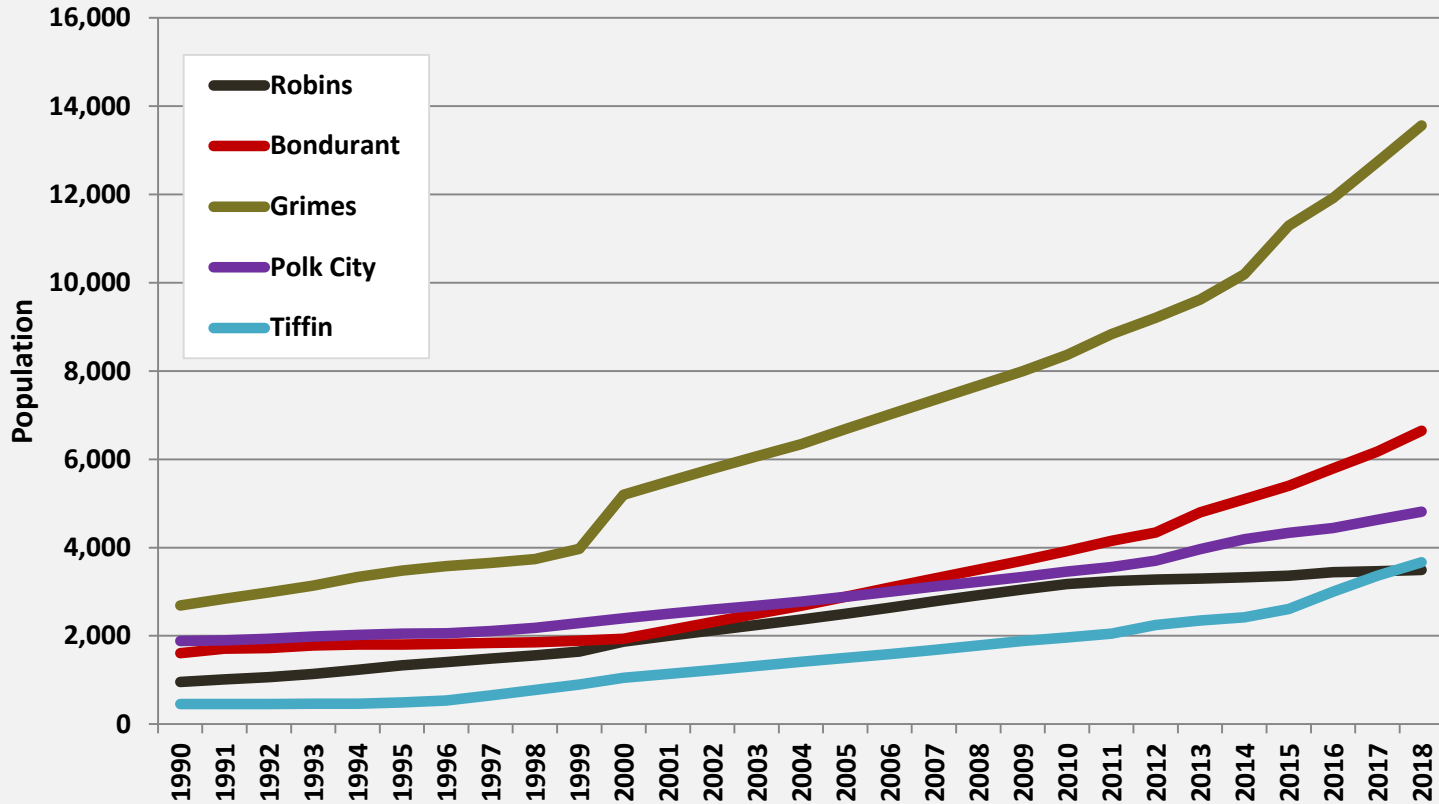


Prepared by
Strategic Economics Group
November 2019

Comparison Cities



Comparison Cities Population Trends, 1990 - 2018



Comparison Cities Characteristics, 2017

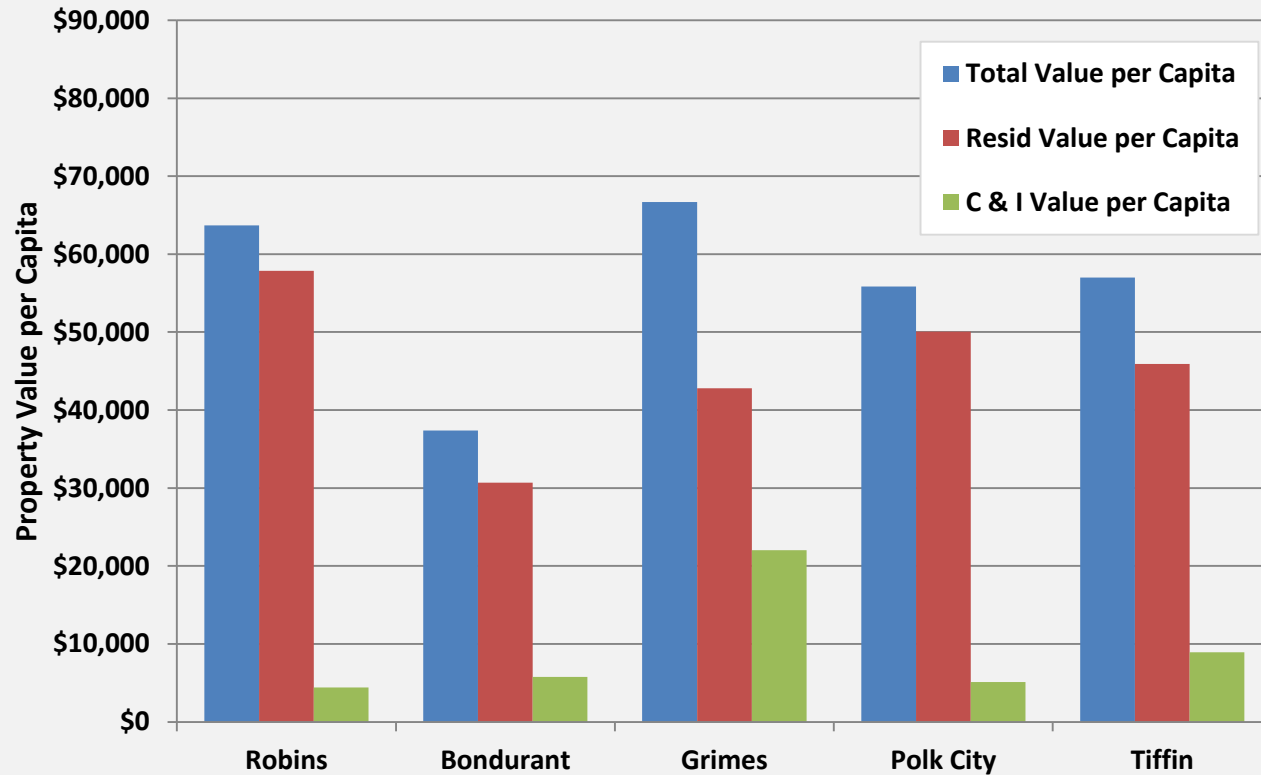
Characteristic	Robins	Bondurant	Grimes	Polk City	Tiffin
Population	3,467	6,175	12,734	4,633	3,359
Number of Households	1,209	1,812	4,107	1,370	1,093
Average Persons per Household	2.9	3.4	3.1	3.4	3.1
Median Household Income	\$120,938	\$75,357	\$92,250	\$92,188	\$67,650
Mean Household Income	\$150,624	\$80,579	\$99,946	\$105,890	\$72,242
Total Household Income (\$ Mil)	\$182.1	\$146.0	\$410.5	\$145.1	\$79.0
Owner-Occupied Housing Units	1170	1571	3120	1139	695
Rental Housing Units	39	241	987	231	398
Median House Value	\$286,700	\$180,600	\$199,700	\$226,700	\$203,900
Taxable Retail Sales (\$ Mil), 2018	\$8.8	\$23.3	\$274.5	\$22.6	\$12.6
Area (sq. mi.)	5.84	8.40	11.87	4.47	4.14

Property Valuations, 2018

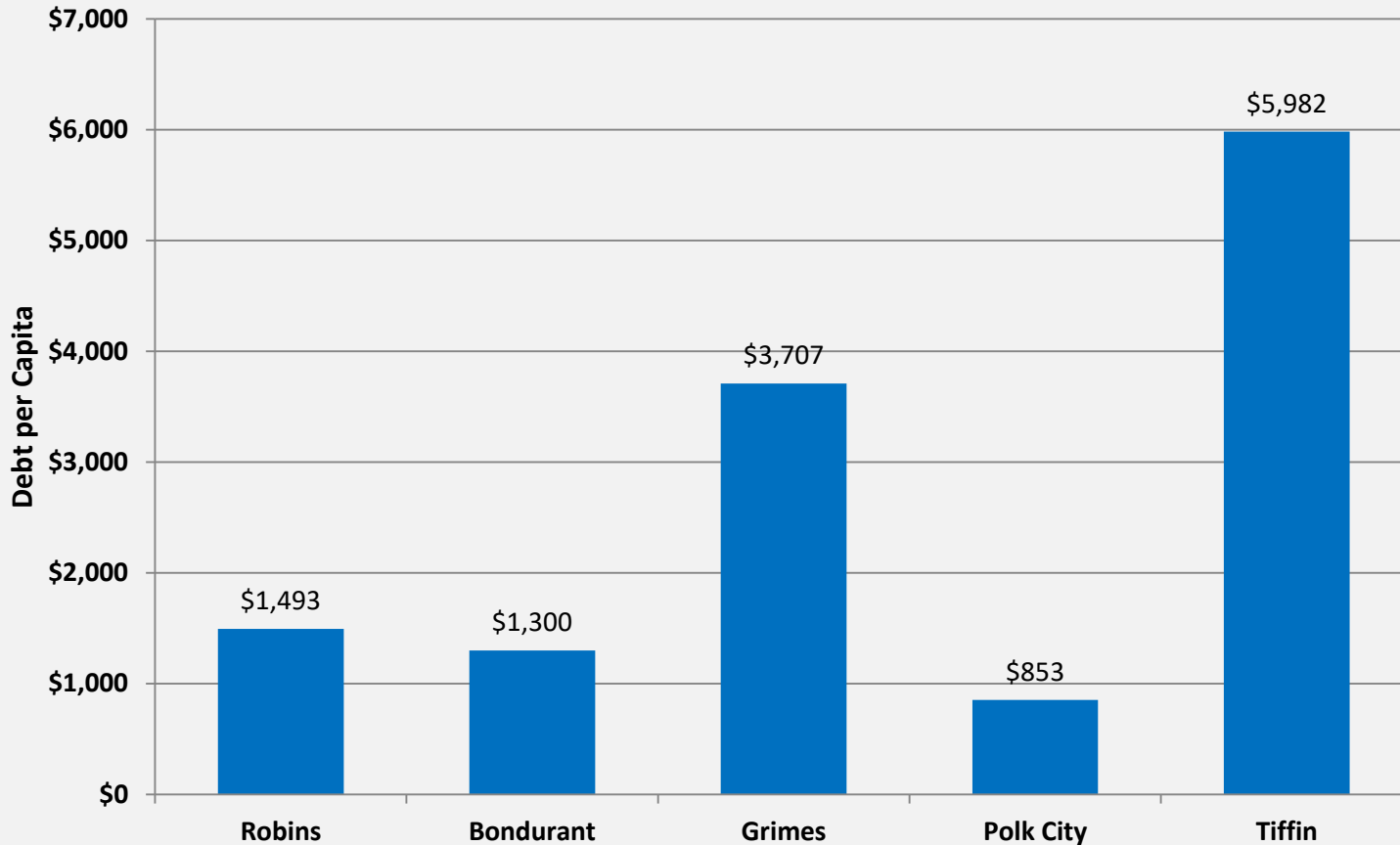
Property Classification	Property Valuations				
	Robins	Bondurant	Grimes	Polk City	Tiffin
Residential	\$198,729,205	\$200,680,500	\$557,142,551	\$238,989,397	\$165,330,179
Multiresidential	\$3,302,858	\$3,183,750	\$23,210,649	\$1,720,838	\$3,226,823
Ag Land and Buildings	\$2,356,747	\$3,523,238	\$3,705,517	\$538,333	\$795,351
Commercial	\$15,482,871	\$35,426,250	\$257,558,589	\$24,540,489	\$32,747,437
Industrial	\$0	\$2,901,600	\$40,957,911	\$0	\$0
Other	\$2,518,595	\$2,624,585	\$21,608,401	\$2,731,423	\$7,100,913
Total	\$222,390,276	\$248,339,923	\$904,183,618	\$268,520,480	\$209,200,703

Property Classification	Property Valuation Shares				
	Robins	Bondurant	Grimes	Polk City	Tiffin
Residential	89.4%	80.8%	61.6%	89.0%	79.0%
Multiresidential	1.5%	1.3%	2.6%	0.6%	1.5%
Ag Land and Buildings	1.1%	1.4%	0.4%	0.2%	0.4%
Commercial	7.0%	14.3%	28.5%	9.1%	15.7%
Industrial	0.0%	1.2%	4.5%	0.0%	0.0%
Other	1.1%	1.1%	2.4%	1.0%	3.4%
Total	100.0%	100.0%	100.0%	100.0%	100.0%

Property Valuations per Capita, 2018



Outstanding Debt per Capita, 2019



Comparison Cities Revenue Budgets Shares, FY2020

Revenue Sources	Robins	Bondurant	Grimes	Polk City	Tiffin
Taxes Levies on Property	38.1%	20.4%	21.8%	34.6%	13.3%
Less: Uncollected Property Taxes	0.0%	0.0%	0.0%	0.0%	0.0%
Delinquent Property Taxes	0.0%	0.0%	0.0%	0.0%	0.0%
TIF Revenues	24.1%	3.9%	4.4%	4.8%	7.6%
Total Property Taxes	62.2%	24.3%	26.2%	39.4%	20.9%
Other City Taxes	11.9%	0.2%	0.8%	10.0%	0.5%
Licenses and Permits	1.0%	2.1%	1.5%	2.9%	2.7%
Use of Money and Property	0.3%	0.1%	0.2%	3.6%	0.3%
Intergovernmental	10.9%	8.2%	15.4%	7.0%	10.0%
Charges for Fees & Service	13.5%	18.7%	15.4%	36.6%	14.5%
Special Assessments	0.0%	0.1%	0.2%	0.0%	0.0%
Miscellaneous	0.2%	3.7%	7.8%	0.4%	0.7%
Other Financing Sources	0.0%	42.7%	32.5%	0.0%	50.4%
Total Revenues	100.0%	100.0%	100.0%	100.0%	100.0%

Comparison Cities Expenditures Budgets Shares, FY2020

Expenditure Categories	Robins	Bondurant	Grimes	Polk City	Tiffin
Public Safety	7.8%	11.5%	9.4%	25.1%	3.5%
Public Works	20.7%	7.9%	5.3%	9.0%	2.2%
Health and Social Services	0.0%	0.1%	0.1%	0.2%	0.0%
Culture and Recreation	12.5%	4.1%	4.0%	7.6%	2.1%
Community and Economic Development	2.3%	1.4%	3.5%	3.7%	0.9%
General Government	7.6%	4.6%	2.8%	8.6%	2.7%
Debt Service	23.2%	8.4%	6.5%	4.4%	8.8%
Capital Projects	14.8%	38.2%	57.0%	16.1%	57.9%
Total Government Activities	88.9%	76.1%	88.7%	74.6%	78.0%
Business Type/Enterprises	11.1%	23.9%	11.3%	25.4%	22.0%
Total Expenditures	100.0%	100.0%	100.0%	100.0%	100.0%

Comparison Cities Expenditures Budgets per Capita, FY2020

Expenditure Categories	Robins	Bondurant	Grimes	Polk City	Tiffin
Public Safety	\$109	\$277	\$382	\$408	\$150
Public Works	\$287	\$189	\$215	\$147	\$93
Health and Social Services	\$0	\$2	\$4	\$3	\$0
Culture and Recreation	\$173	\$98	\$160	\$124	\$91
Community and Economic Development	\$32	\$33	\$143	\$61	\$37
General Government	\$106	\$111	\$115	\$139	\$115
Debt Service	\$321	\$202	\$265	\$71	\$378
Capital Projects	\$205	\$917	\$2,310	\$262	\$2,485
Total Government Activities	\$1,233	\$1,829	\$3,593	\$1,216	\$3,350
Business Type/Enterprises	\$154	\$575	\$459	\$414	\$945
Total Expenditures	\$1,386	\$2,404	\$4,052	\$1,630	\$4,295

Comparisons Cities Staffing Levels

Number of Employees All Functions

Staffing	Robins	Bondurant	Grimes	Polk City	Tiffin
Full-time	3	25	55	21	11
Part-time	14	7	34	3	0
Volunteer	20	20	15	40	25
Total	37	52	104	64	36

Public Safety of Employees

Staffing	Robins	Bondurant	Grimes	Polk City	Tiffin
Full-time Fire	0	6	13	1	0
Volunteer Fire	20	20	15	40	25
Total Fire	20	26	28	41	25
Full-time Police	0	0	0	7	0
Part-time Police	8	0	0	0	0
Contract with		Polk Co	Polk Co		Johnson Co
Total Police	8	0	0	7	0
Population	3,492	6,646	13,562	4,809	3,670
Full-Time/1,000 Residents	0.86	3.76	4.06	4.37	3.00
Part-time/1,000 Residents	4.01	1.05	2.51	0.62	0.00
FTE/1,000 Residents	1.86	4.02	4.68	4.52	3.00
Volunteer Fire/1,000 Residents	5.73	3.01	1.11	8.32	6.81

Major Challenges Facing Comparison Cities

- Providing improvements to existing roads, such as widening, resurfacing, adding turn lanes and signals.
- Constructing new roads of various capacities and functional categories.
- Extending and adding capacity to water, wastewater, and storm water infrastructure.
- Purchasing new public safety equipment and either renovating old or constructing new public safety facilities.
- Developing new parks, trails, and other recreational facilities.
- Expanding public works, building code, and planning departments and adding administrative office space.